

# DESIGN + DECOR

CONNECTICUT  
NEW JERSEY  
NEW YORK



# THE DESIGNER ISSUE

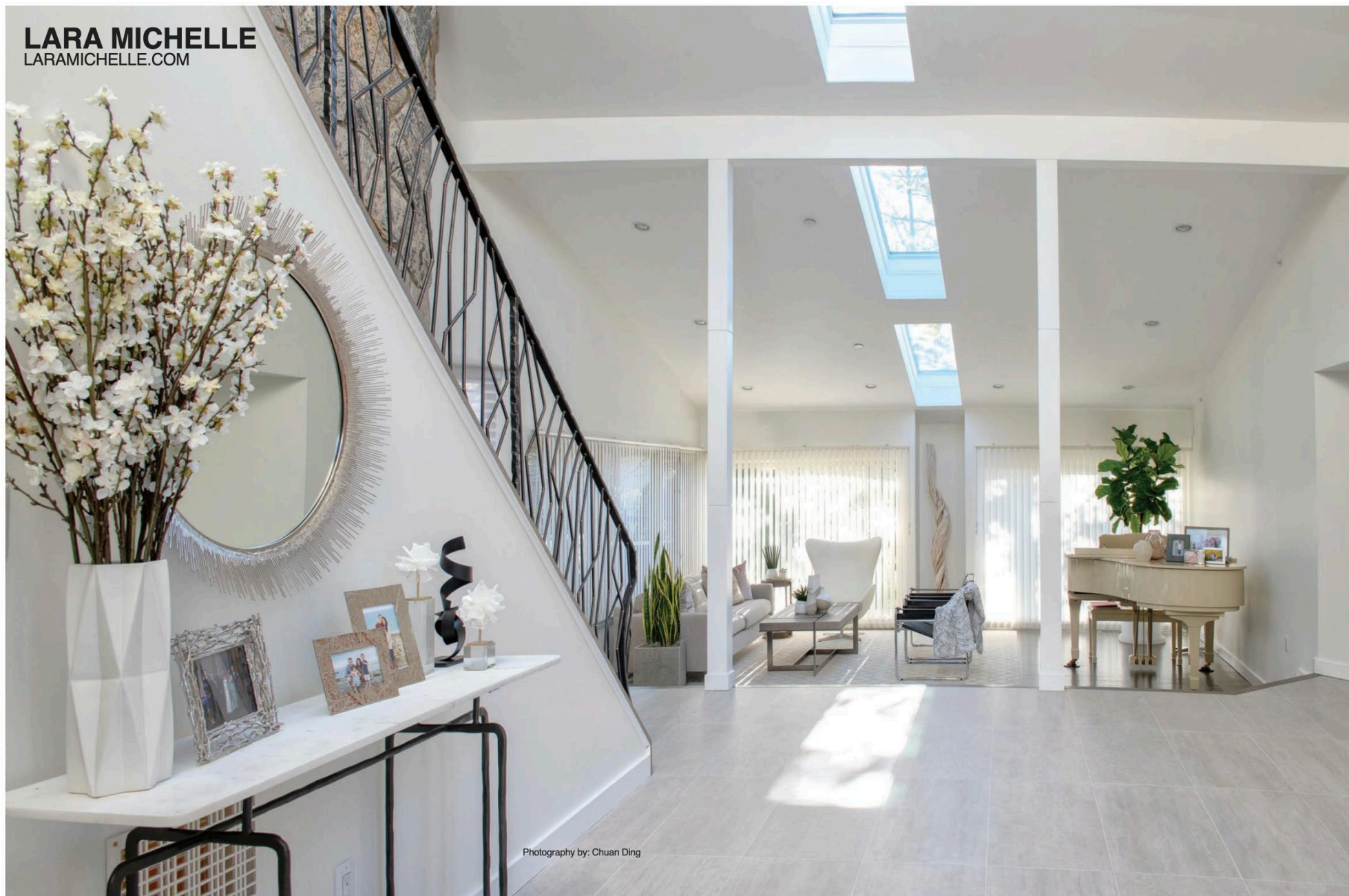
\$5.95 US



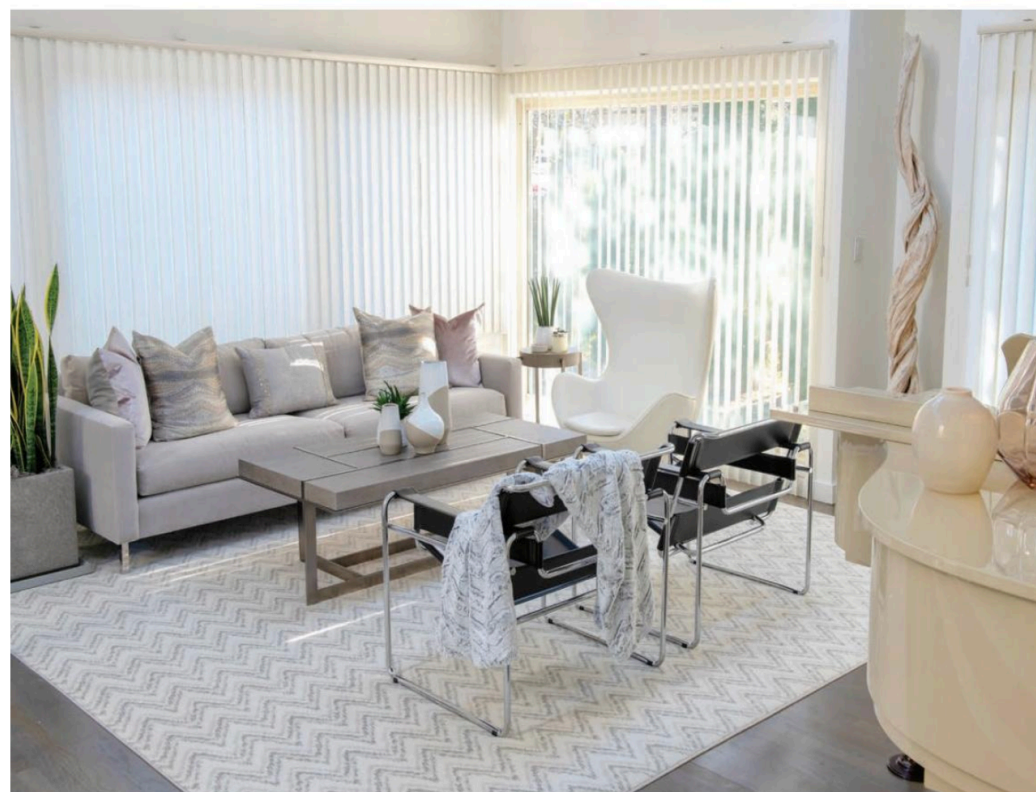


**LARA MICHELLE**  
LARAMICHELLE.COM

Photography by: Chuan Ding







As well-loved as biophilic design is, it can often present unique challenges that designers have to decide how to overcome. For instance, when using a neutral color palette throughout an entire space, it can be difficult to make sure that the room is also interesting, warm, and inviting. When Lara Michelle of Lara Michelle Designs was approached about this project, the clients informed her that they wanted “a natural, light-filled, bright, and airy space.”

“They loved neutral tones and the use of earthy materials such as stone, wood, iron, and leather...because they love bringing the look and feel of nature inside their home, but in a chic and modern way,” Michelle explained.

Throughout this space, Michelle achieved this look “by using lots of texture and some pops of pattern such as the angles in the stair railing, and the zig-zagging rug pattern. A few pops of black here and there also break up all of the lighter neutrals.”

Previously, the home had been a terrible yellow, with outdated floors that made the space look extremely busy. Lara Michelle Designs took out some of the half-walls that had boxed the space in, then completely redecorated the space to make it light, airy, open, and streamlined.

“The artisan iron railing compliments the huge stone wall running up the staircase beautifully. For the foyer floor, we selected porcelain tiles in large format that resemble natural stone in an off-white color to keep the space open, light-filled and airy. The modern skylights help to bring in the sunlight and enhance the style,” Michelle said.

The design team turned the ugly, closed-off, and outdated space and made it a modern, chic, and natural home that is completely inviting and comfortable and that this family will be able to enjoy for many years.