

EAST COAST HOME+DESIGN

CONNECTICUT | NEW JERSEY | NEW YORK

THE 2016 DESIGNERS ISSUE



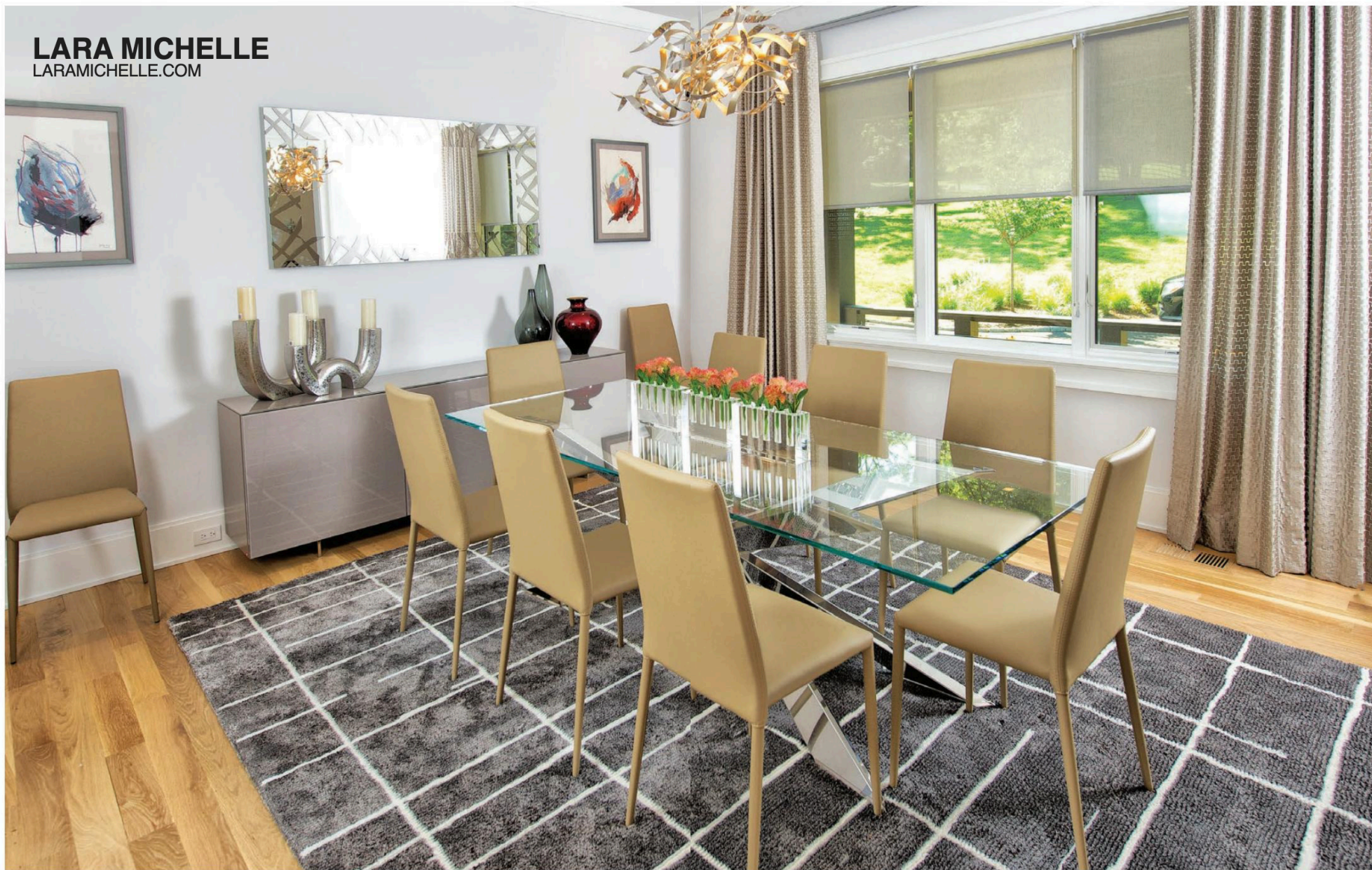
\$5.95 US



05

0 74470 23559 0

LARA MICHELLE
LARAMICHELLE.COM





White is considered the color of perfection, and designer Lara Michelle believes that “white keeps everything light and bright.” Lara loves using shades of white as backdrops, to contrast against furniture and artwork. She understands its importance when designing for her clients, and, in this instance, she was asked to design a dining room and powder room for a new construction in Greenwich, CT.

The homeowners had previously purchased the modern chrome-

base and glass-top dining room table and taupe leather chairs during a trip to Italy, and Lara was hired to complete the room. She started with a “marbled” gray rug with white lines running through it. The lines lead the eyes in different directions and are the perfect amount of crisp white. The drapes are a commanding tan, with an off-white pattern running through them. The homeowners had a long piece of burgundy-colored artwork, which they also wanted Lara to incorporate into the room. She selected additional pieces of modern art to coordinate with it, all while keeping the other colors in the room neutral with

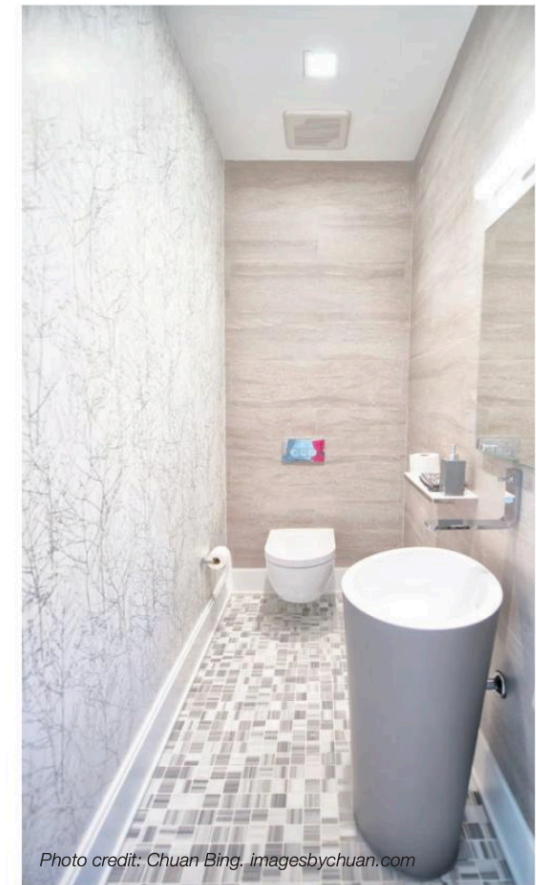


Photo credit: Chuan Bing. imagesbychuan.com

grays, whites, taupes and silver, which “really makes the artwork stand out nicely,” she says.

White was also integrated into the sleeker modern powder room, which was long and narrow, and needed its fixtures to be small and modern. Lara believes that whites are important to use in smaller rooms and dark rooms that have no windows or don’t get much light. In this case, Lara “didn’t want to clutter the long empty wall with artwork,” she says, “so instead I chose a delicately patterned silver-white wallpaper to fill the wall with a bit of shimmer and tons of interest.” The white, silver and gray color scheme keeps the small room light and bright even though it has no windows.

Lara likes to pick a white color for wall paint with a tint of the color that will coordinate with any other colors in the room. She then uses a brighter white on the window trim, doors and ceilings to contrast with the off-white color on the wall. Unless her clients insist, she tries to steer them away from white fabrics on upholstered items, for obvious practical reasons. The only white/light-colored upholstery fabric she likes to use is a faux-leather vinyl fabric, which is great at resisting stains and dirt.